



CAVAWOOD

architectural wood poles

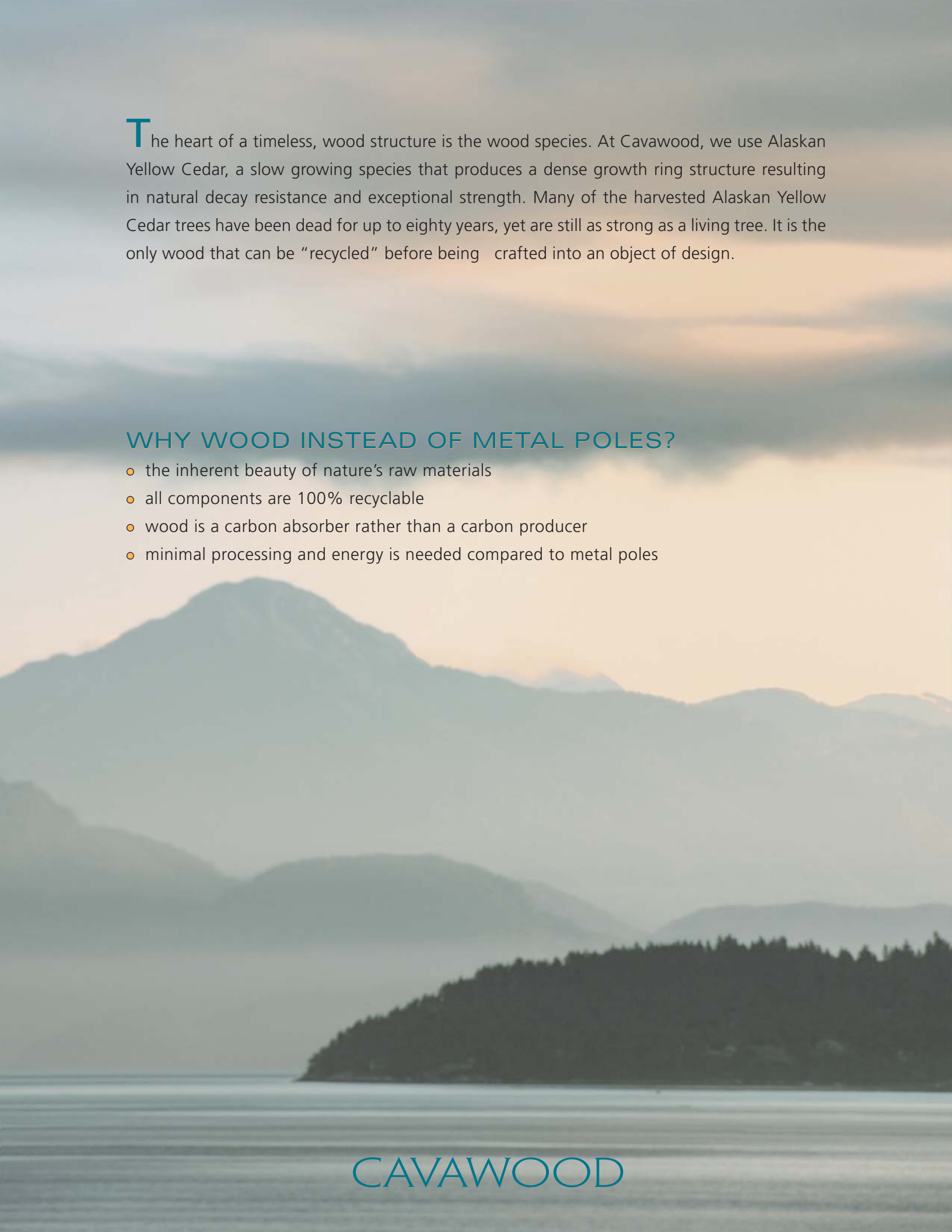


CAVAWOOD

Cavawood Architectural Products
13792 Compark Blvd. Englewood, CO 80112
720 389.6618
www.cavawood.com

copyright 2009
All products are made in the USA





The heart of a timeless, wood structure is the wood species. At Cavawood, we use Alaskan Yellow Cedar, a slow growing species that produces a dense growth ring structure resulting in natural decay resistance and exceptional strength. Many of the harvested Alaskan Yellow Cedar trees have been dead for up to eighty years, yet are still as strong as a living tree. It is the only wood that can be “recycled” before being crafted into an object of design.

WHY WOOD INSTEAD OF METAL POLES?

- the inherent beauty of nature’s raw materials
- all components are 100% recyclable
- wood is a carbon absorber rather than a carbon producer
- minimal processing and energy is needed compared to metal poles

CAVAWOOD





WHY CAVAWOOD POLES?

NATURAL ELEGANCE

- The inherent beauty of wood is a composition of grain, knots and other natural markings.
- The laminated, tapered shafts are composed of full length boards - no small joined pieces.
- Every Cavawood pole has a unique visual signature of color and texture.

PREMIUM MATERIALS

- Alaskan Yellow Cedar is naturally resistant to decay from moisture and insects. Other common wood species require treatment with toxic chemicals for preservation.
- The ultra compressed growth ring structure increases resistance to weather and improves strength. AYC averages forty growth rings per inch versus five growth rings per inch for douglas fir.
- Manufactured in the USA of locally sourced materials. All components, except for the trees, are produced within 50 miles of our production facility to minimize the energy consumed during the manufacturing cycle.

DESIGN PERFORMANCE

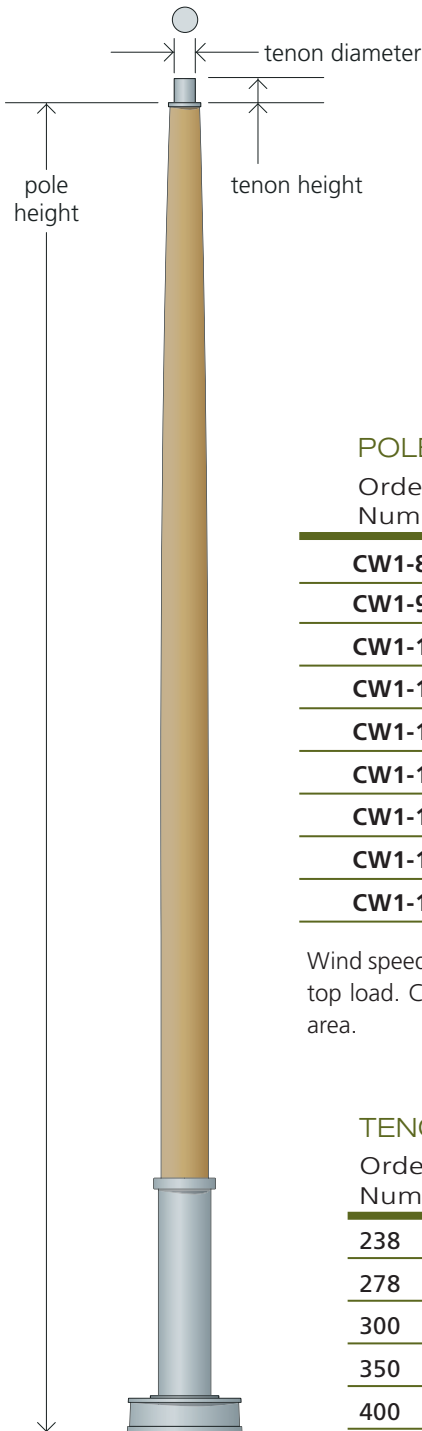
- Patent pending base design allows for industry standard installation and wiring procedures. The cast aluminum base protects the wood shaft from landscaping and snow removal equipment.







CAVAWOOD



Order Sequence Example

pole number	tenon diameter	tenon height	base & tenon color	wood shaft finish
1	2	3	4	5
CW1-12	300	30	BRNZ	SAND

POLE HEIGHT

Order Number	Height	Wt Lbs	Maximum Allowable EPA (in MPH)								
			85	90	100	110	120	130	140	150	
CW1-8	8' (2.4M)	92	29.9	25.8	20.2	16.2	13.1	11.1	9.2	8.6	
CW1-9	9' (2.7M)	98	27.1	22.8	18.0	14.4	11.7	9.8	8.3	7.9	
CW1-10	10' (3.1M)	103	23.8	20.7	16.5	13.3	10.9	9.3	7.9	6.8	
CW1-11	11' (3.4M)	109	21.5	18.7	14.8	11.9	9.7	8.2	7.0	6.0	
CW1-12	12' (3.7M)	114	19.1	16.7	13.0	10.5	8.5	7.1	6.0	5.1	
CW1-13	13' (4.0M)	120	17.4	15.3	11.9	9.4	7.7	6.3	5.3	4.5	
CW1-14	14' (4.3M)	125	15.7	13.8	10.7	8.3	6.8	5.5	4.6	3.8	
CW1-15	15' (4.7M)	131	14.1	13.0	10.0	7.8	6.2	5.1	4.4	3.5	
CW1-16	16' (4.9M)	136	12.4	12.1	9.2	7.2	5.6	4.7	4.1	3.2	

Wind speeds are based on the AASHTO 2001 standards for 3 second wind bursts. Based on a 100 pound top load. Check with your local jurisdiction for the applicable wind speed design loads in your project area.

TENON DIAMETER

Order Number	Measure
238	2 3/8" (60mm)
278	2 7/8" (73mm)
300	3.0" (76mm)
350	3 1/2" (89mm)
400	4.0" (102mm)

TENON HEIGHT

Order Number	Measure
25	2 1/2" (64mm)
30	3.0" (76mm)
35	3 1/2" (89mm)
40	4.0" (102mm)
50	5.0" (127mm)

BASE & TENON COLOR

Order
Number Description



SLVR Silver with clear coat



BRNZ Architectural Bronze



BLACK Black

* All colors are lightly textured, semi-gloss high performance polyester powder coatings.

* Custom colors based on the international RAL Color System are available with a lightly textured semi-gloss finish. Specify the color by the four digit RAL number. Example: RAL 8017

WOOD SHAFT FINISH

Order
Number Description



BEIGE translucent stain



SIENNA translucent stain



BROWN translucent stain

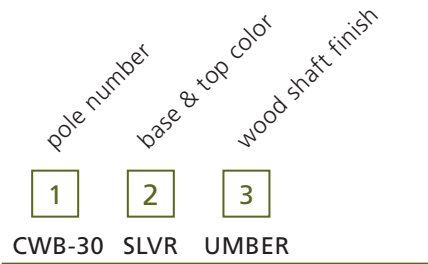


COFFEE translucent stain

NATR
Natural, unfinished wood will turn silver gray over time.
Shipped with a transparent protective coating for handling protection.

Bollard ordering information

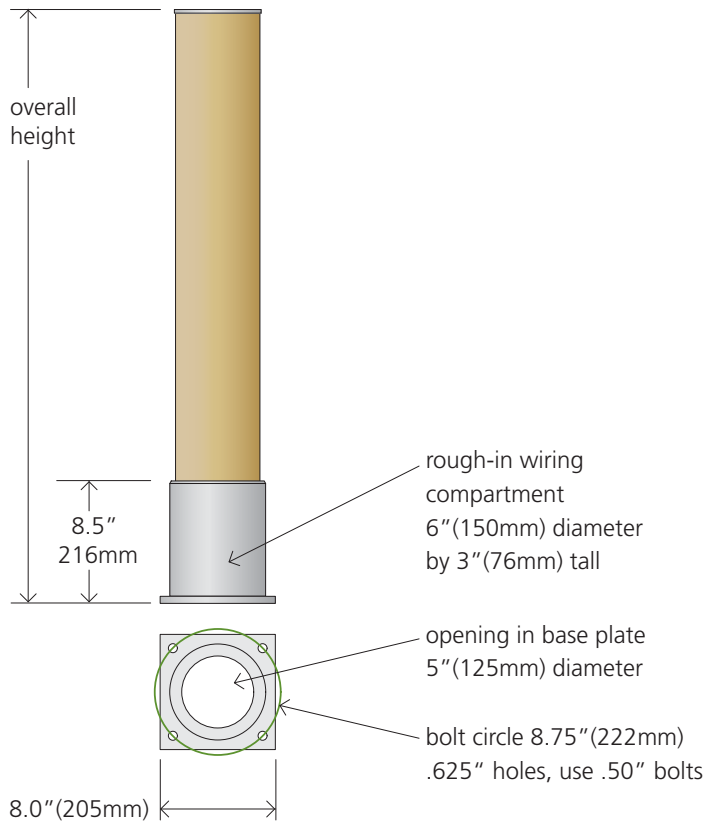
Order Sequence Example



BOLLARD

Order Number	Height
CWB-24	30" (610mm)
CWB-30	30" (760mm)
CWB-36	36" (914mm)
CWB-42	42" (1070mm)

The top plate can be provided with a 1" (25mm) central opening for wiring access and threaded holes for mounting a light fixture. Provide a dimensioned drawing for pricing and production.



Bollard Specification

Bollard Shaft

The pole shaft is produced from a laminated beam of full length, one piece planks of L1 grade Alaskan Yellow Cedar, to ANSI/AITC A190.1 standards using a waterproof exterior grade adhesive. The AYC wood is harvested from well managed forests. The pole shaft is 5.75" (146mm) diameter. A central internal wireway of 1.50" (38mm) diameter is provided.

Bollard Shaft Finish

The wood is naturally resistant to insects and decay. No chemical preservatives are required to protect and preserve the wood. The wood shaft is finished with a water based, non VOC, silicone impregnated translucent color stain for long term service in the elements. Natural, unstained shafts are coated with a sealer to protect from scuffs and soiling during installation. The translucent finish will fade over time, and can be renewed with an additional coat of stain after cleaning the surface. Normal service between renewal coats is ten years.

Base

The aluminum base has a central rough-in wiring compartment, including a ground lug. Use 1/2" anchor bolts. After installation and leveling, use a non-shrink grout to fill the gap under the base.

Base and Top Plate Finish

Polyester powder coat textured finish. Available in three standard colors or RAL colors. The exterior grade, UV-resistant finish provides excellent salt spray resistance according to ASTM B117 testing procedures.

Pole Specification

Pole Shaft

The pole shaft is produced from a laminated beam of full length, one piece planks of L1 grade Alaskan Yellow Cedar, to ANSI/AITC A190.1 standards using a waterproof exterior grade adhesive. The AYC wood is harvested from well managed forests. The pole shaft is tapered from 5.75" (146mm) at the base, to 4.75" (120mm) at the top of the pole. A central internal wireway of 3/4" (19mm) diameter is provided. The pole shaft is mated to the pole base using proprietary adhesive materials, forming a watertight, fully coupled structural bond between the shaft and the pole. No mechanical fasteners are used.

Pole Shaft Finish

The AYC wood is naturally resistant to insects and decay. No chemical preservatives are required to protect and preserve the wood. The wood shaft is finished with a water based, non VOC, silicone impregnated translucent color stain for long term service in the elements. Natural, unstained shafts are coated with a sealer to protect from scuffs and soiling during installation. The translucent finish will fade over time, and can be renewed with an additional coat of stain after cleaning the surface. Normal service between renewal coats is six to twelve years depending on the environmental conditions. Exposed wood that turns gray can be restored to its natural color with an oxalic acid based deck cleaner. Some minor checking and or splitting will naturally occur on the wood surface over time.

Pole Base

The cast A356 aluminum base has a central rough-in wiring compartment connected to an accessible 2" x 4" (50mm x 100mm) wiring compartment under the base cover. A ground lug is included within the wiring compartment. Use four 3/4" x 21" galvanized anchor bolts with eight washers and nuts for leveling. After installation and leveling, use a non-shrink grout to fill the gap under the base.

Base Cover

One piece cast aluminum cover, seals the base with a silicone o-ring gasket at the central shaft and silicone sponge gasket on the underside of the cover to seal the wiring compartment. The cover is secured with four captive, stainless steel fasteners.

Tenon

An aluminum tenon of the specified diameter and height is finished to match the base and fixture.

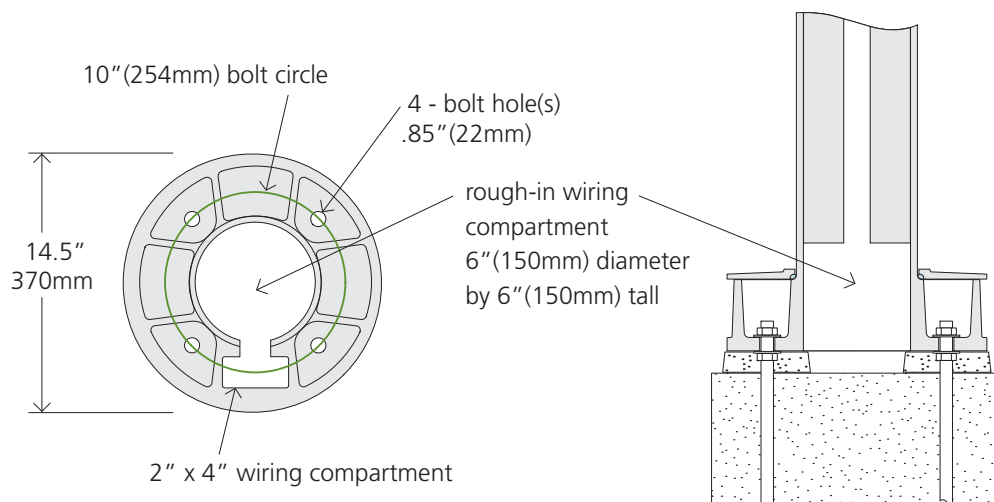
Base and Tenon Finish

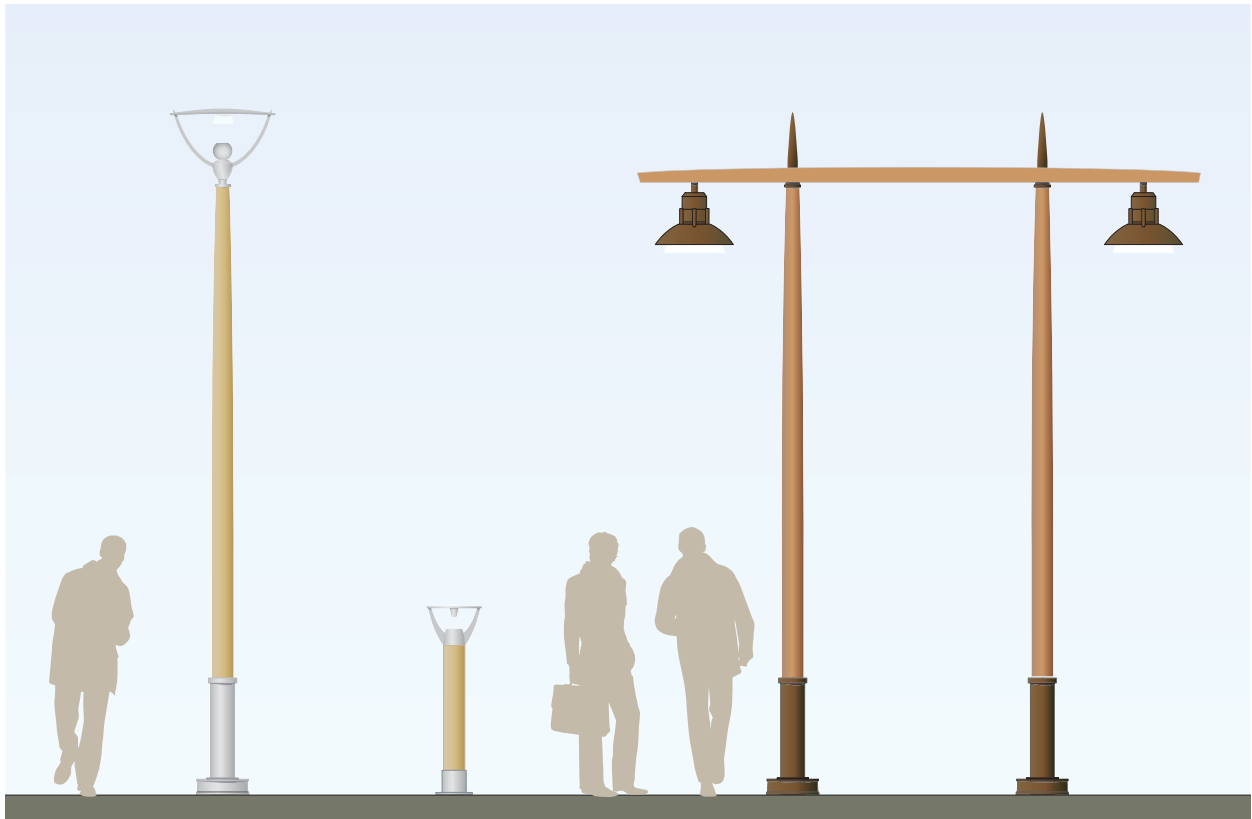
Polyester powder coat textured finish. Available in three standard colors or RAL colors. The exterior grade, UV-resistant finish provides excellent salt spray resistance according to ASTM B117 testing procedures.

Warranty

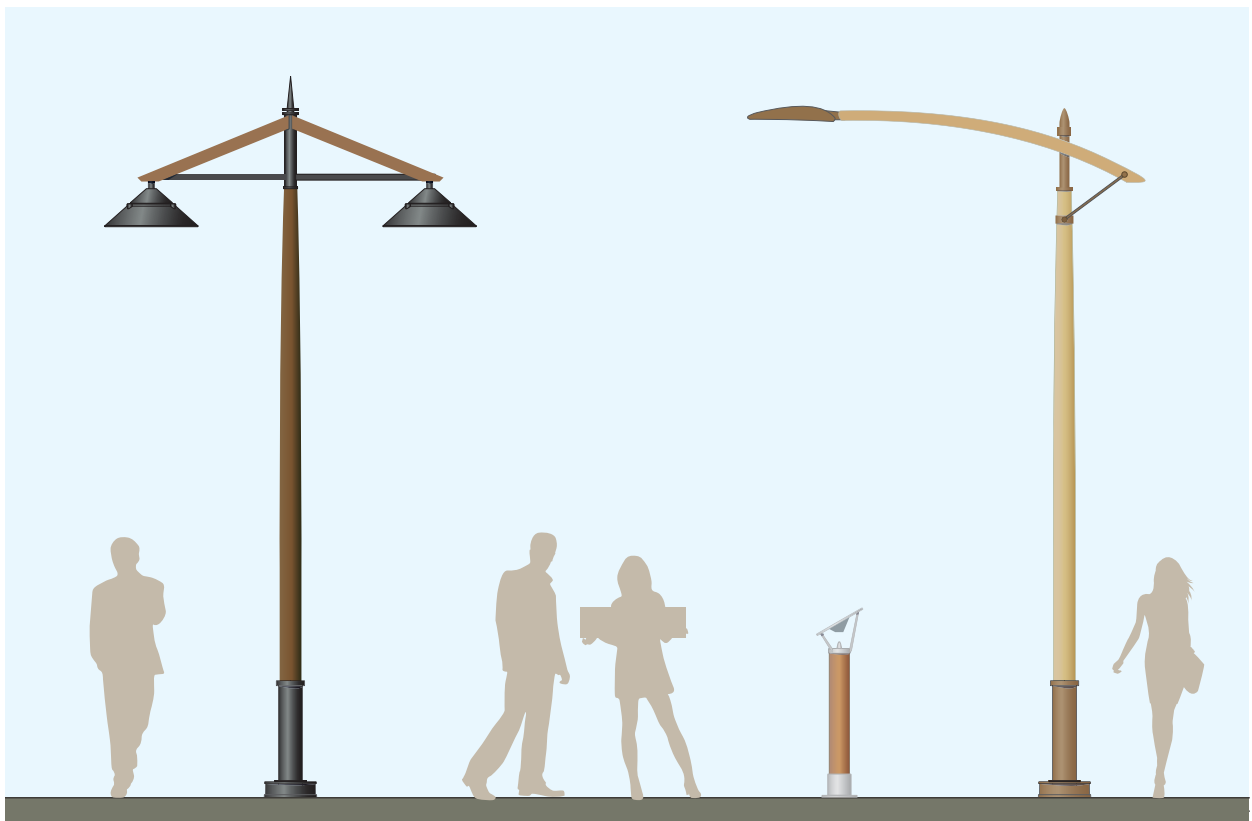
The product is warranted to be free from manufacturing defects for three years from the date of shipment.

Pole Anchor Base Detail





Cavawood can provide a wide range of lighting, arms and accessories to fulfill your project requirements.



CAVAWOOD

Cavawood Architectural Products
13972 Compark Blvd. Englewood CO 80112
720 123.2345 www.cavawood.com