

# CAVAWOOD

## architectural wood bollard

project

date

type

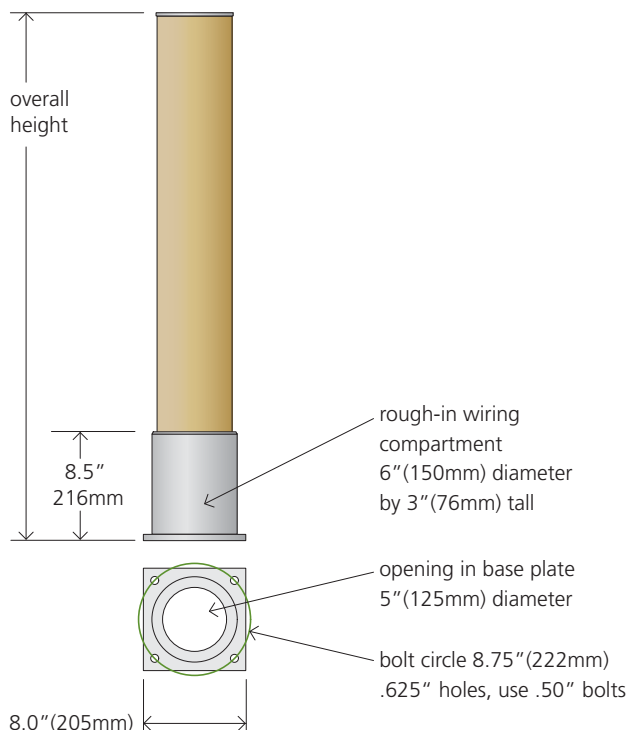
### Order Sequence Example



### ● BOLLARD

Order Number	Height
○ CWB-24	30" (610mm)
○ CWB-30	30" (760mm)
○ CWB-36	36" (914mm)
○ CWB-42	42" (1070mm)

The top plate can be provided with a 1" (25mm) central opening for wiring access and threaded holes for mounting a light fixture. Provide a dimensioned drawing for pricing and production.



## Bollard Specification

### Bollard Shaft

The pole shaft is produced from a laminated beam of full length, one piece planks of L1 grade Alaskan Yellow Cedar, to ANSI/AITC A190.1 standards using a waterproof exterior grade adhesive. The AYC wood is harvested from well managed forests. The pole shaft is 5.75" (146mm) diameter. A central internal wireway of 1.50" (38mm) diameter is provided.

### Bollard Shaft Finish

The wood is naturally resistant to insects and decay. No chemical preservatives are required to protect and preserve the wood. The wood shaft is finished with a water based, non VOC, silicone impregnated translucent color stain for long term service in the elements. Natural, unstained shafts are coated with a sealer to protect from scuffs and soiling during installation. The translucent finish will fade over time, and can be renewed with an additional coat of stain after cleaning the surface. Normal service between renewal coats is six to twelve years.

### Base

The aluminum base has a central rough-in wiring compartment, including a ground lug. Use 1/2" anchor bolts. After installation and leveling, use a non-shrink grout to fill the gap under the base.

### Base and Top Plate Finish

Polyester powder coat textured finish. Available in three standard colors or RAL colors. The exterior grade, UV-resistant finish provides excellent salt spray resistance according to ASTM B117 testing procedures.

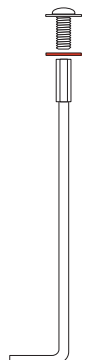
### Warranty

The product is warranted to be free from manufacturing defects for three years from the date of shipment.

### OPTIONAL ANCHOR BOLT SETS

Order Number	
ABS	set of 4

The set includes four assemblies. Each assembly includes a 12" long anchor bolt, with a stainless steel washer and button head bolt for attaching the bollard. Each set includes a paper template for setting the anchor bolts into the foundation.



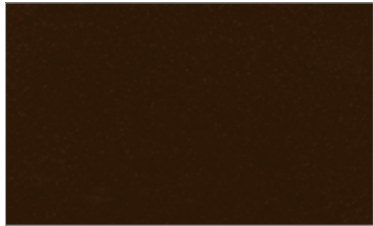
# CAVAWOOD

● **BASE & TENON COLOR**

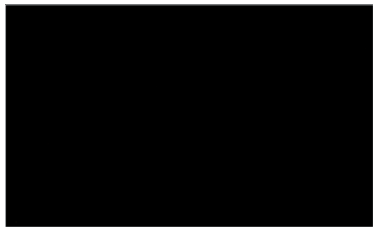
Order Number      Description



**SLVR**      Silver with clear coat



**BRNZ**      Architectural Bronze



**BLACK**      Black

\* All colors are lightly textured, semi-gloss high performance polyester powder coatings.

\* Custom colors based on the international RAL Color System are available with a lightly textured semi-gloss finish. Specify the color by the four digit RAL number. Example: RAL 8017

● **WOOD SHAFT FINISH**

Order Number      Description



**BEIGE**      translucent stain



**SIENNA**      translucent stain



**BROWN**      translucent stain



**COFFEE**      translucent stain

**NATR**

Natural, unfinished wood will turn silver gray over time.  
Shipped with a transparent protective coating for handling protection.

