

CAVAWOOD

architectural wood poles

project

date

type

CW3

• pole number

• tenon diameter

• tenon height

• base & tenon color

• wood shaft finish

• options



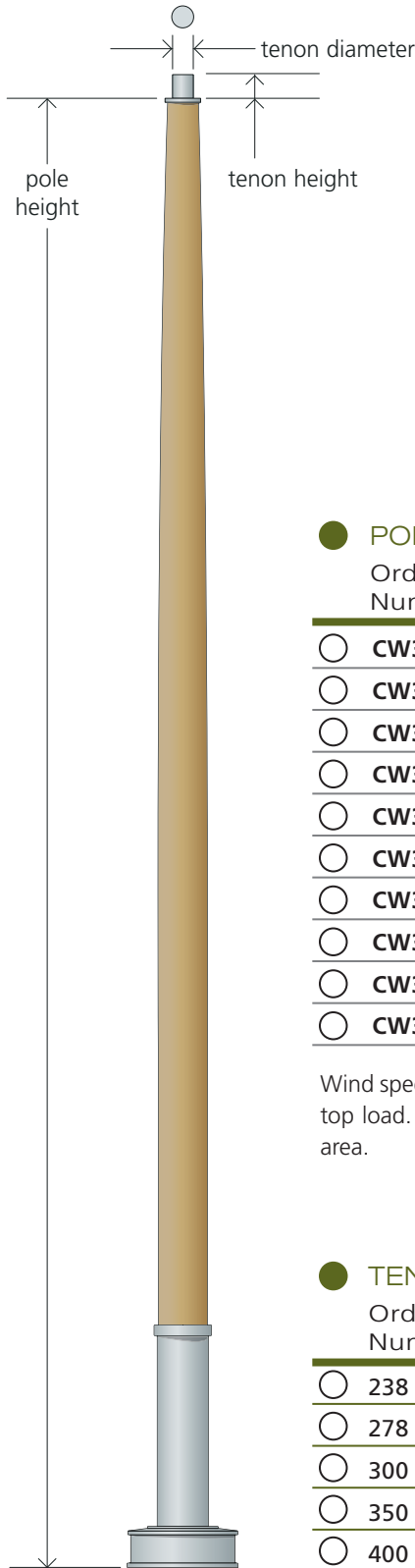
CW3

ROUND TAPERED POLES

- 16 to 25 foot high poles.
- Tapered round shaft
- Alaskan Yellow Cedar is naturally resistant to decay from moisture and insects. Other common wood species require treatment with toxic chemicals for preservation.
- The laminated, shafts are composed of full length boards - no small joined pieces.
- The ultra compressed growth ring structure increases resistance to weather and improves strength. AYC averages forty growth rings per inch versus five growth rings per inch for douglas fir.
- Manufactured in the USA of locally sourced materials.
- All components, except for the trees, are produced within 50 miles of the production facility to minimize the energy consumed during the manufacturing cycle.
- Specify the tenon height and diameter for the specified luminaire and arm.

CW3

ROUND TAPERED POLES 16 to 25 feet



Order Sequence Example

pole number	tenon diameter	tenon height	base & tenon color	wood shaft finish	options
1	2	3	4	5	6
CW3-20	300	30	BRNZ	BROWN	JBX

POLE HEIGHT

Order Number	Height	Wt Lbs	Maximum Allowable EPA (in MPH)							
			85	90	100	110	120	130	140	150
○ CW3-16	16' (4.9M)	178	30.0	26.4	21.0	17.2	14.3	12.0	10.3	8.9
○ CW3-17	17' (5.2M)	186	26.9	23.6	18.7	15.3	12.7	10.7	9.1	7.9
○ CW3-18	18' (5.5M)	194	25.4	22.2	17.6	14.3	11.9	10.0	8.5	7.3
○ CW3-19	19' (5.8M)	202	21.7	18.9	14.9	12.1	10.0	8.4	7.1	6.1
○ CW3-20	20' (6.1M)	210	19.4	16.8	13.1	10.6	8.8	7.3	6.1	5.2
○ CW3-21	21' (6.4M)	218	17.3	15.0	11.7	9.4	7.7	6.4	5.4	4.6
○ CW3-22	22' (6.7M)	226	16.3	14.0	10.9	8.7	7.1	5.9	5.0	4.1
○ CW3-23	23' (7.0M)	234	14.6	12.5	9.6	7.6	6.2	5.1	4.3	3.6
○ CW3-24	24' (7.3M)	240	13.7	11.7	8.9	7.0	5.7	4.7	3.9	3.2
○ CW3-25	25' (7.7M)	250	12.6	10.6	8.0	6.3	5.1	4.1	3.4	2.8

Wind speeds are based on the AASHTO 2001 standards for 3 second wind bursts. Based on a 100 pound top load. Check with your local jurisdiction for the applicable wind speed design loads in your project area.

TENON DIAMETER

Order Number	Measure
○ 238	2 3/8" (60mm)
○ 278	2 7/8" (73mm)
○ 300	3.0" (76mm)
○ 350	3 1/2" (89mm)
○ 400	4.0" (102mm)

TENON HEIGHT

Order Number	Measure
○ 25	2 1/2" (64mm)
○ 30	3.0" (76mm)
○ 35	3 1/2" (89mm)
○ 40	4.0" (102mm)
○ 50	5.0" (127mm)

● **BASE & TENON COLOR**

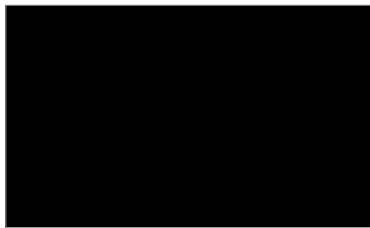
Order
Number Description



SLVR Silver with clear coat



BRNZ Architectural Bronze



BLACK Black

* All colors are lightly textured, semi-gloss high performance polyester powder coatings.

* Custom colors based on the international RAL Color System are available with a lightly textured semi-gloss finish. Specify the color by the four digit RAL number. Example: RAL 8017

● **WOOD SHAFT FINISH**

Order
Number Description



BEIGE translucent stain



BROWN translucent stain

NATR

Natural, unfinished wood will turn silver gray over time.
Shipped with a transparent protective coating for handling protection.



SIENNA translucent stain



COFFEE translucent stain



● **J-BOX**
Order
Number

○ **JBX** rectangular j-box housing

Cast aluminum single gang housing painted to match base.

- Does not include the electrical receptacle or cover.
Refer to local codes for approved devices.

Shown with a receptacle and cover for illustration purposes.



CW3 Pole Specification

Pole Shaft

The pole shaft is produced from a laminated beam of full length, one piece planks of L1 grade Alaskan Yellow Cedar, to ANSI/AITC A190.1 standards using a waterproof exterior grade adhesive. The AYC wood is harvested from well managed forests. The pole is a round tapered shaft 6.75" (171mm) in diameter at the base, and 5.5" (140mm) in diameter at the top. A central internal wire way of 3/4" (19mm) diameter is provided. The pole shaft is mated to the pole base using proprietary adhesive materials, forming a watertight, fully coupled structural bond between the shaft and the pole. No mechanical fasteners are used.

Pole Shaft Finish

The AYC wood is naturally resistant to insects and decay. No chemical preservatives are required to protect and preserve the wood. The wood shaft is finished with a water based, non VOC, silicone impregnated translucent color stain for long term service in the elements. Natural, unstained shafts are coated with a sealer to protect from scuffs and soiling during installation. The translucent finish will fade over time, and can be renewed with an additional coat of stain after cleaning the surface. Normal service between renewal coats is six to twelve years depending on the environmental conditions. Exposed wood that turns gray can be restored to its natural color with an oxalic acid based deck cleaner. Some minor checking and or splitting will naturally occur on the wood surface over time.

Pole Base

The cast A356 aluminum base has a central rough-in wiring compartment connected to an accessible 2"x 4" (50mm x 100mm) wiring compartment under the base cover. The wiring compartment is sealed with a silicone gasket. A ground lug is included within the wiring compartment. Use four 3/4" x 21" galvanized anchor bolts with eight washers and nuts for leveling. After installation and leveling, use a non-shrink grout to fill the gap under the base.

Base Cover

One piece cast aluminum cover, seals the base with a silicone o-ring gasket at the central shaft and silicone sponge gasket on the underside of the cover to seal the wiring compartment. The cover is secured with four captive, stainless steel fasteners.

Tenon

An aluminum tenon of the specified diameter and height is finished to match the base and fixture.

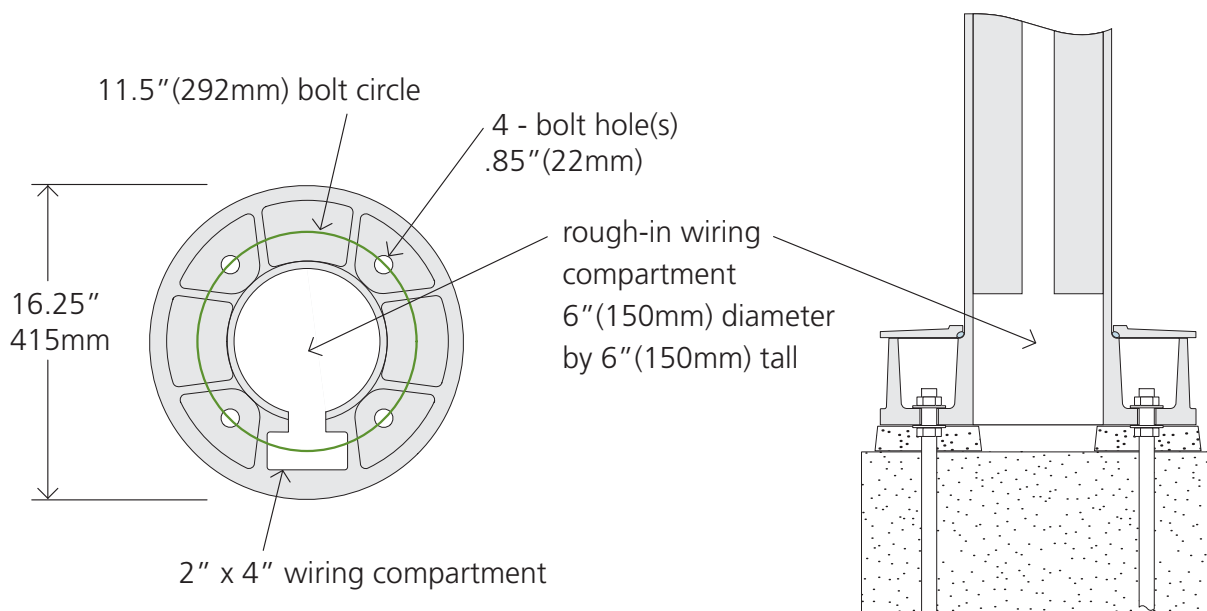
Base and Tenon Finish

Polyester powder coat textured finish. Available in three standard colors or RAL colors. The exterior grade, UV-resistant finish provides excellent salt spray resistance according to ASTM B117 testing procedures.

Warranty

The product is warranted to be free from manufacturing defects for three years from the date of shipment.

Pole Anchor Base Detail



copyright 2010